



RISHITA ENGINEERS
TRUST | TECHNOLOGY | SUCCESS

τ HOOK

τ HOOK





FEATURES

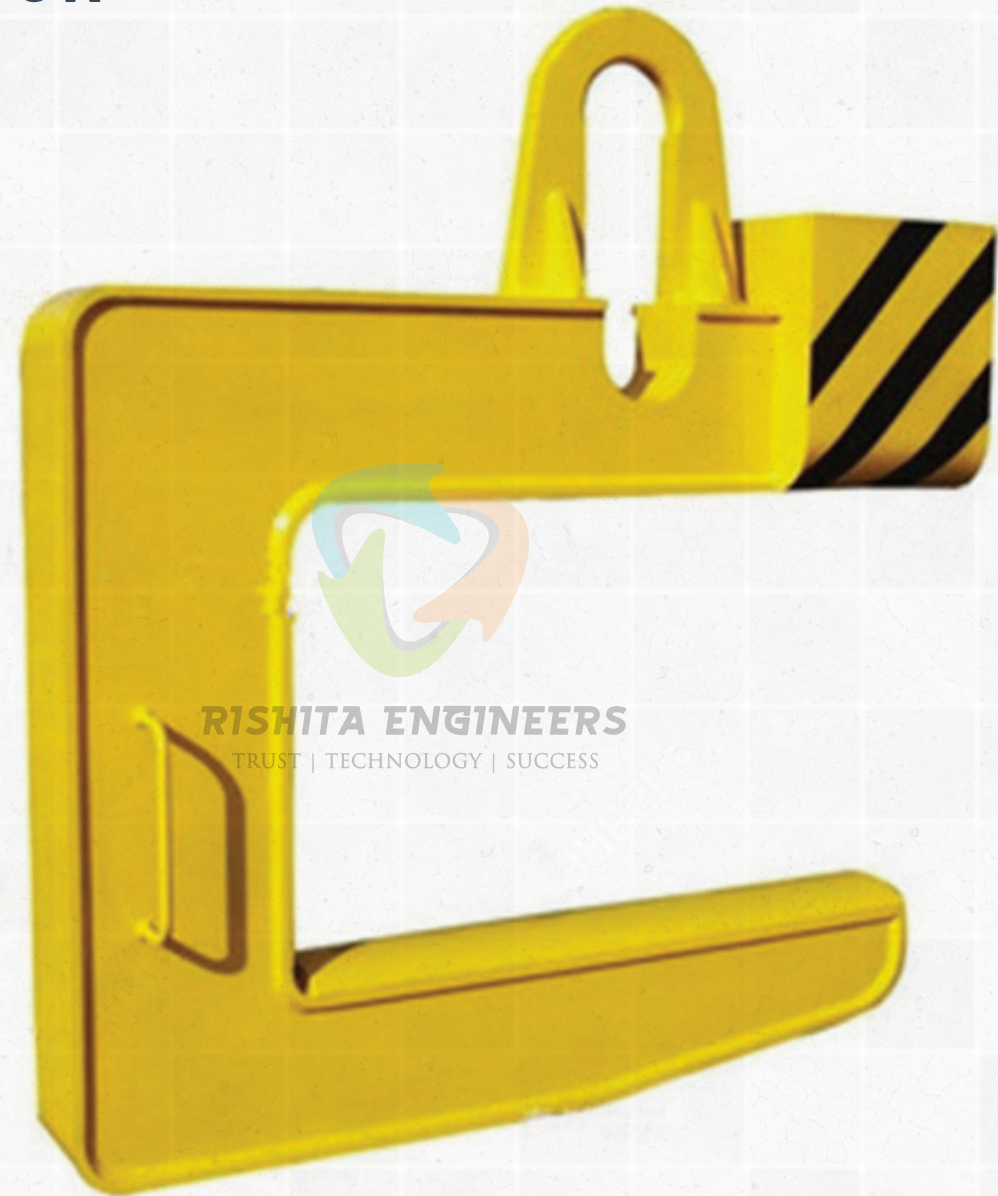
- › Recessed counterweight allows for close stacking of coils which
- › Maximizes floor space.
- › Handles a wide range of coil widths. Designed for heavy duty application.
- › High tensile alloy steel plate reduces physical size and weight.
- › Counter balanced to hang level when empty.
- › Inside radius on hooks avoid coil edge contact.
- › Curved coil saddle is standard.
- › Guide handles for ease of hook positioning.
- › Available with optional padding for additional coil protection.
- › Complies with ASME standards.



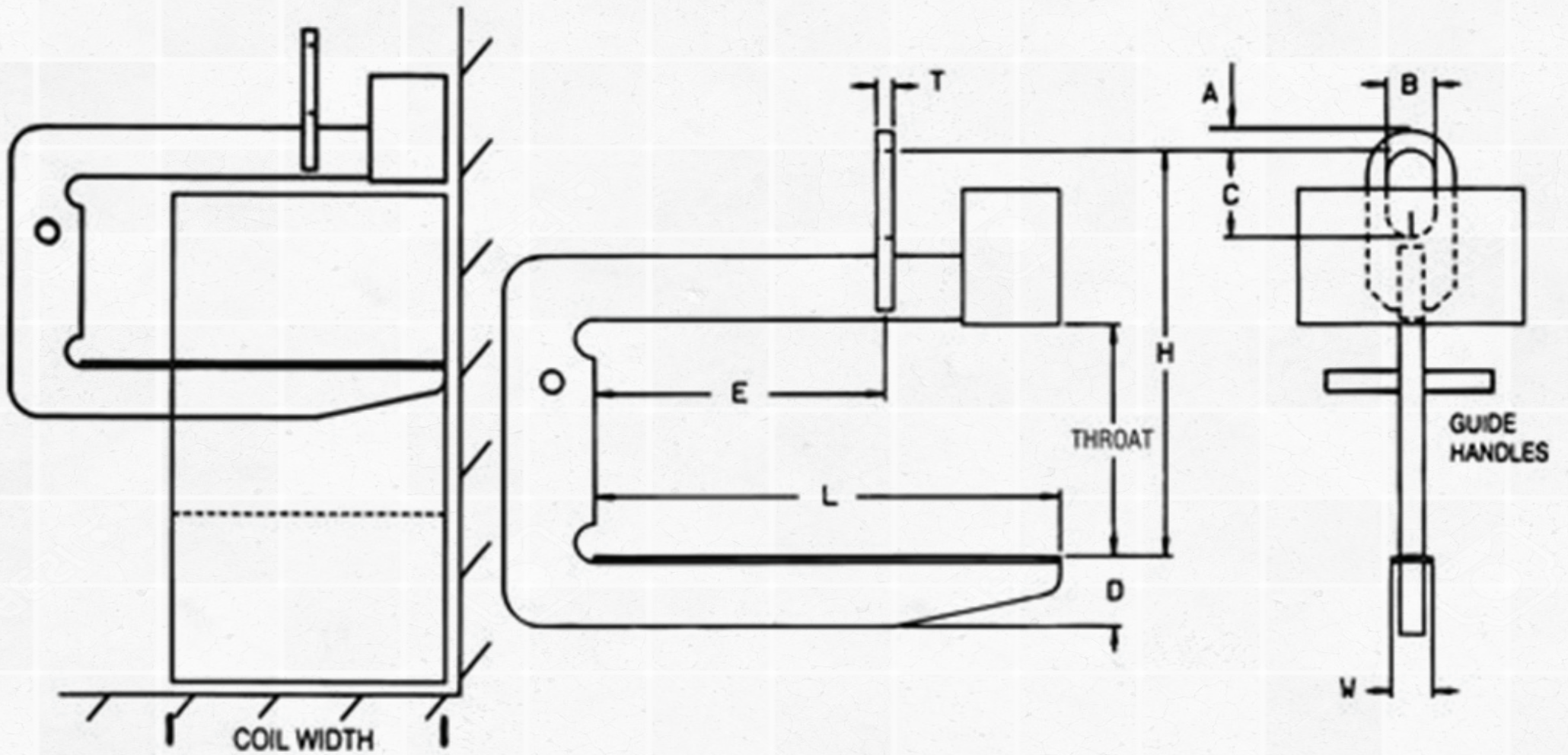
APPLICATIONS

- › Heavy Duty Material Handling
- › Paper Roll Handling
- › Slit Coil Handling
- › Close stacking C-Hook
- › Pivoting coil C-Hook

C HOOK



RISHITA ENGINEERS
TRUST | TECHNOLOGY | SUCCESS





SPECIFICATIONS

Model	Capacity (Tons)	Dimensions (mm)		Throat	Lifting Arm	Length L	Depth D	Width W	HR Headroom	Bail Dimensions			Thickness T	Weight (Kgs)	
		Coil Width	Min							Max.	Opening				
											A	B			C
REC-5-915	5	915	610	610	762	135	100	946	40	100	175	32	250		
REC-5-1220		1220	762	610	990	155	100	967	40	100	175	32	320		
REC-5-1524		1524	915	610	1220	175	100	990	40	100	175	32	387		
REC-7.5-915	7.5	915	610	610	762	135	100	952	40	100	175	38	340		
REC-7.5-1220		1220	762	610	990	155	100	972	40	100	175	38	451		
REC-7.5-1524		1524	915	610	1220	175	100	990	40	100	175	38	526		
REC-10-1220	10	1220	762	610	990	183	100	1050	50	125	225	45	545		
REC-10-1524		1524	915	610	1220	194	100	1054	50	125	225	45	746		
REC-10-1830		1830	1070	610	1450	185	100	1044	50	125	225	45	953		
REC-15-1220	15	1220	762	762	990	185	100	1216	50	125	225	45	932		
REC-15-1524		1524	915	762	1220	200	100	1220	60	125	225	45	1094		
REC-15-1830		1830	1070	762	1450	223	100	1240	50	125	225	45	1276		
REC-20-1524	20	1524	915	762	1220	230	100	1323	60	150	300	50	1300		
REC-20-1830		1830	1070	762	1450	250	100	1333	60	150	300	50	1340		
REC-25-1524	25	1524	915	865	1220	225	100	1466	65	150	350	57	1395		
REC-25-1830		1830	1070	865	1450	250	100	1492	65	150	350	57	1620		
REC-30-1524	30	1524	915	865	1220	250	100	1492	70	150	350	64	1580		
REC-30-1830		1830	1070	865	1450	275	100	1510	70	150	350	64	1935		
REC-40-1830	40	1830	1070	965	1450	275	125	1730	83	175	450	750	2770		



RISHITA ENGINEERS

TRUST | TECHNOLOGY | SUCCESS

Rishita Engineers

#50, 7th Cross , Doddanna Industrial Estate,
Near Mahalaxmi Store , Hegganahalli,
Bangalore -560091.

☎ +91 78921 88393 / +91 99006 34070

✉ info@rishitaengineers.com

🌐 www.rishitaengineers.com

